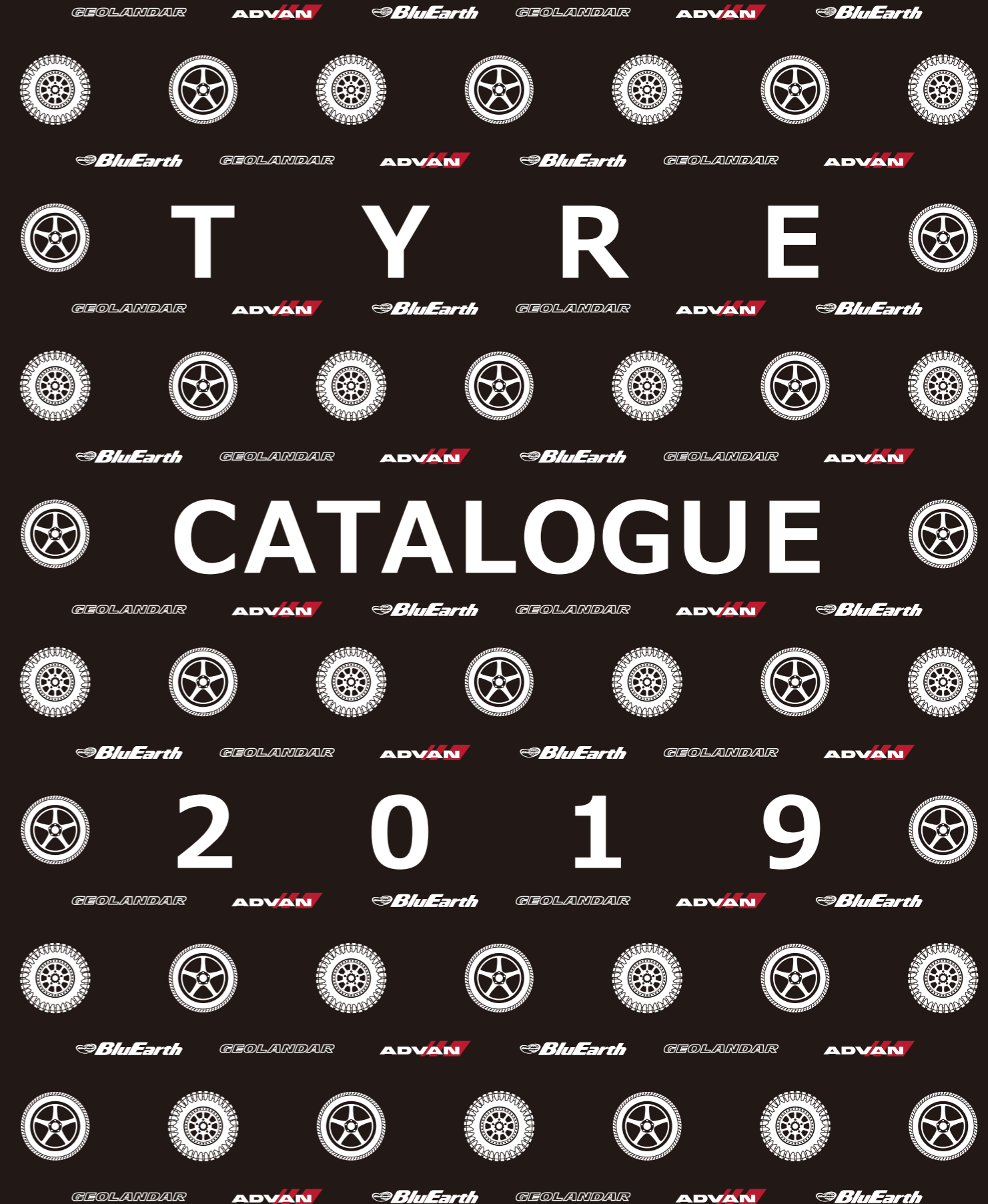




# YOKOHAMA

## TYRE CATALOGUE 2019



**YOKOHAMA**

<http://www.y-yokohama.com/global/product/tire/>

© 2019 by THE YOKOHAMA RUBBER CO., LTD.  
Printed in JAPAN



CE255  
JPC

01

# Delivering top quality YOKOHAMA Tyres to customers everywhere



**YOKOHAMA Global**

We at YOKOHAMA will be celebrating our 100th anniversary in 2017.

Ever since we were established, our focus as a tyre manufacturer has been to produce the highest quality tyres possible, since tyres are a component critical to vehicle safety.

Thanks to the loyalty of our customers, our company now manufactures and delivers tyres to destinations around the world. We are pleased to provide this product that serves to support the daily lives of our customers and keep them fully satisfied.

In this connection, we work to boost our technologies on a daily basis.

We integrate not only our tyre plants in Japan but at our overseas locations with cutting-edge production facilities and sophisticated technology standards to produce the highest quality product.

Our promise is to deliver products that customers love from our plants across the globe to customers around the world.

At YOKOHAMA, we are keenly aware of the changing times, which means we never lose our passion to continuously improve safety, quality, and performance — no matter where our tyres are produced.

## Contents

Introduction	01-02
PRODUCT LINE UP	03-04

### ADVAN

ADVAN SPORT V105	5
ADVAN dB V552	7
ADVAN FLEVA V701	9
ADVAN NEOVA AD08R	11
ADVAN A052	13

### BluEarth

BluEarth-A AE50	15
BluEarth-Es Es32	17
BluEarth RV-02	19

### GEOLANDAR

GEOLANDAR X-CV G057	21
GEOLANDAR X-MT G005	23
GEOLANDAR H/T G056	25
GEOLANDAR SUV	27
GEOLANDAR A/T G015	29
GEOLANDAR M/T G003	31

BluEarth-Van RY55	33
-------------------	----

Other Tyres	
PARADA Spec-X / S.drive	34

Original Equipment	35
--------------------	----

List of Available Patterns & Sizes	37-40
------------------------------------	-------

Basic Tyre Knowledge	41
----------------------	----

Sidewall Information	42
----------------------	----

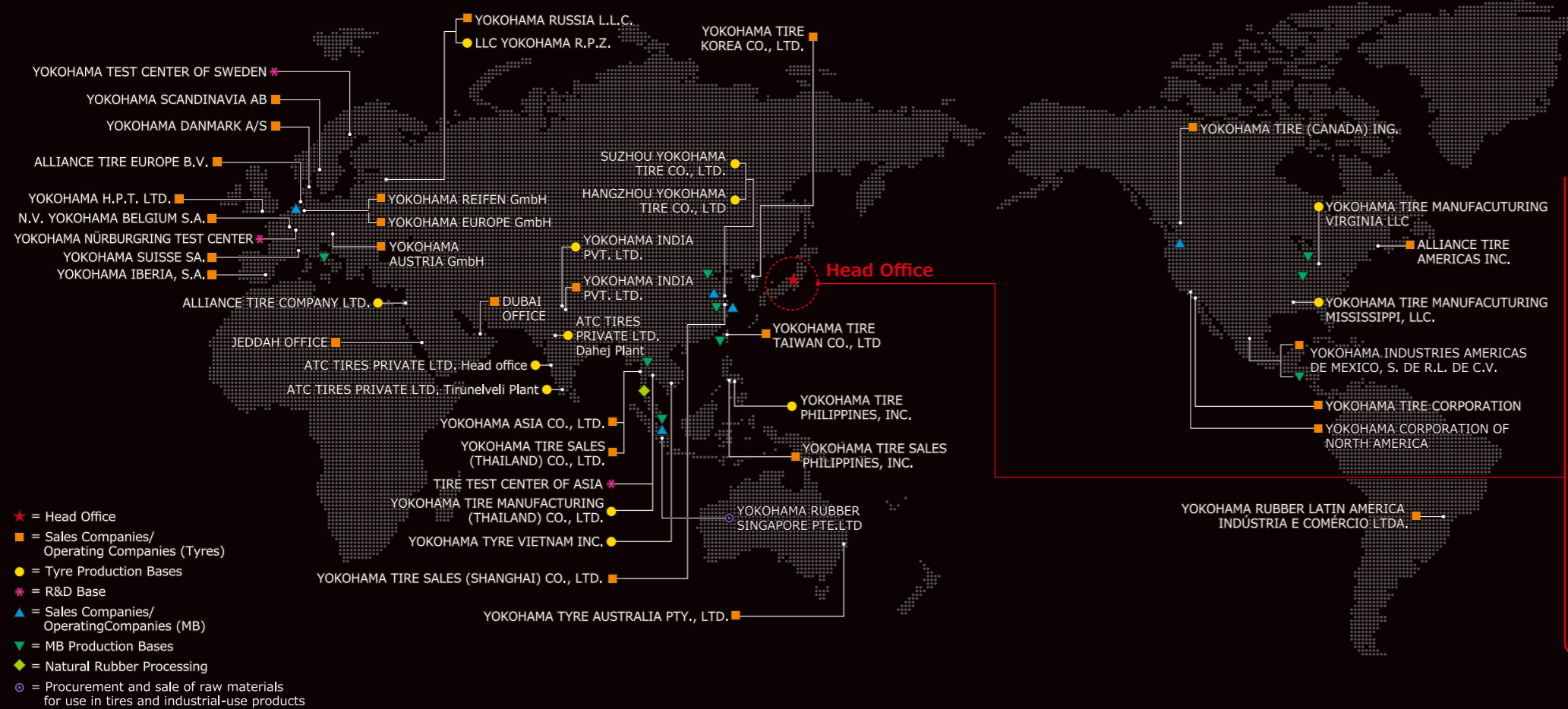
Runflat Tyre	43
--------------	----

Air Pressure, Load Index (LI)	44
-------------------------------	----

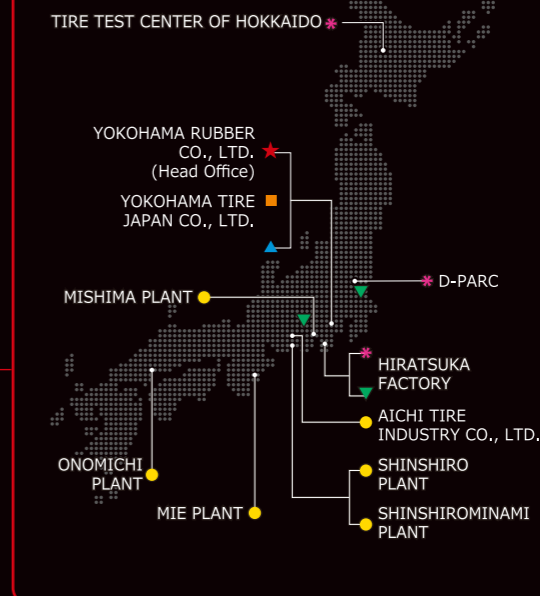
About YOKOHAMA	45-47
----------------	-------

For Your Comfort & Safety	48
---------------------------	----

Check your tyres	49-50
------------------	-------



### Head Office

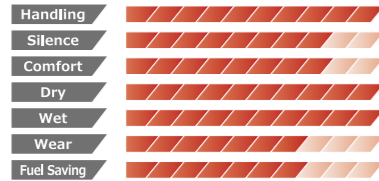


# PRODUCT LINE UP

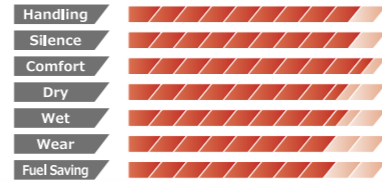
When you choose the tyre that's right for your vehicle type, your car drives the way it should—and the way you want to drive! YOKOHAMA tyre makes driving even more fun.

## High Performance/Sports Car

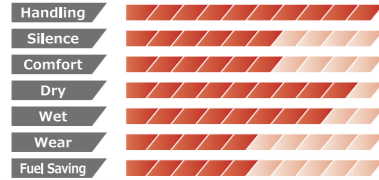
### ADVAN *Sport* V105 P05



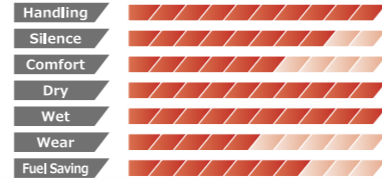
### ADVAN *FLEVA* V701 P09



### ADVAN *NEOVA* ADD R P11

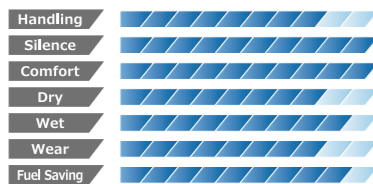


### ADVAN *A052* P13



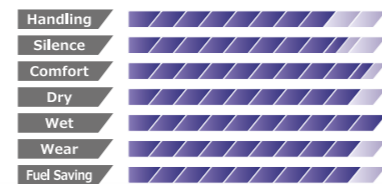
## Luxury Saloon

### ADVAN *dB* V552 P07



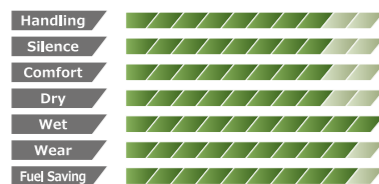
## CUV/MPV

### BluEarth *RV-02* P19

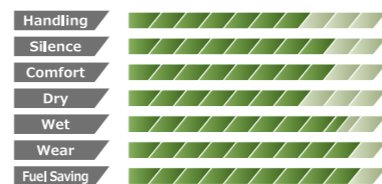


## Family Car

### BluEarth *A* AE-50 P15



### BluEarth *Es* ES32 P17



## SUV

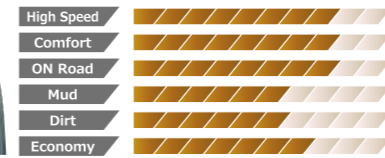
### NEW GEOLANDAR *X-CV* P21



### NEW GEOLANDAR *X-MT* P23



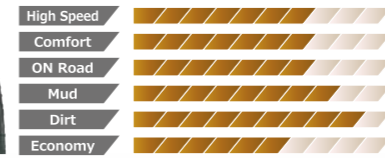
### GEOLANDAR *H/T G056* P25



### GEOLANDAR *SUV* P27



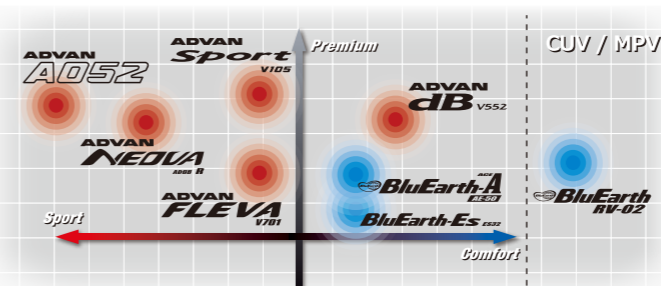
### GEOLANDAR *A/T G013* P29



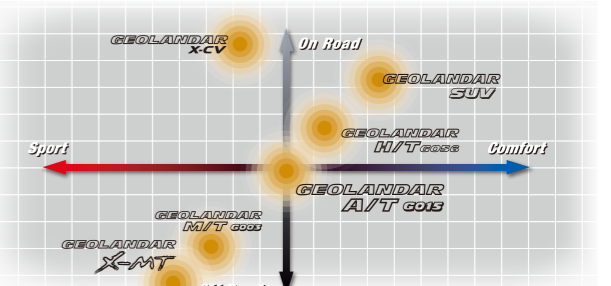
### GEOLANDAR *M/T G003* P31



Passenger Car Tyres Positioning Map



SUV Tyres Positioning Map





Superb Performance Street Tyre

ADVAN Sport V105



HighPerformance /Sports Car

SPEED RANGE (Y)/Y/W/V

23 inch 22 inch 21 inch 20 inch 19 inch 18 inch 17 inch 16 inch



Wet



Dry



Comfort



High Speed



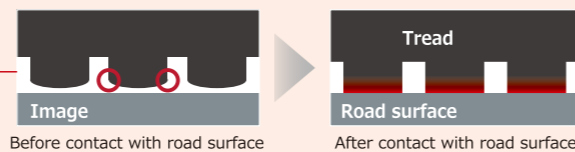
Handling



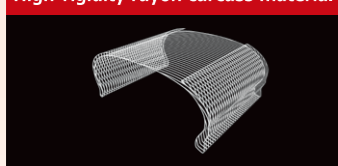
Asymmetric

Pattern No.V105S

Handles precisely as intended



High-rigidity rayon carcass material



Matrix body ply structure enhances steering stability

Improves precision in steering without compromising comfort. Contributes to excellent performance in the dry by conveying power to the road's surface.

Mound profile enhances steering stability With mound profile [ADVAN Sport V105]

In order for the ground contact pressure to be proportionate when making contact with the road surface, we optimized the cross-sectional shape of the tread.

A quiet and comfortable ride

Reduces external rolling noise.

Noise reduction technology

● Silent Sipe These thin slits positioned on the inside of the ribs suppress external vehicle noise.

● Asymmetrical pitch variation Optimizes pitch on the inside and outside of the tyre to achieve both enhanced maneuverability and quietness.

ADVAN Sport V105

Pattern No. V105S

Table listing tire specifications for ADVAN Sport V105, including columns for Inch, Series, Dimensions, OE Mark, Pattern, RF/XL, Overall Diameter (mm), and Approved Rim Width (inch). Rows include various sizes from 23 inch to 16 inch.

Table listing tire specifications for ADVAN Sport V105, including columns for Inch, Series, Dimensions, OE Mark, Pattern, RF/XL, Overall Diameter (mm), and Approved Rim Width (inch). Rows include various sizes from 19 inch to 16 inch.

XL = Extra Load, # = V105T Available size, ☆ = BMW Specification, etc.



Dramatic Silence

ADVAN dB V552



SPEED RANGE

Y/W/V/H

- 20 inch
- 19 inch
- 18 inch
- 17 inch
- 16 inch
- 15 inch

- Wet
- Dry
- Silence
- Comfort
- Handling
- Asymmetric

Pattern No. V552

Beautiful small block design creates breathtaking silence

Arranged more small block

- Silent
- Wet-grip

Twist edge-cutting

- Control the block stiffness by cutting the edge part of the block.
- Preventing uneven wear.

High level silence last for long time.

- Even when it is attached to the driver's seat side, even when it is attached to the passenger's seat side, it is effective for suppressing uneven wear.

Precise groove arrangement

- Designed groove arrangement in millimeters. The grooves which look like one-line are actually shifted in millimeters. By shifting the timing of grounding, prevents concentrating on a specific frequency band & reduces harsh noise.

Reduce harsh noise that man feel uncomfortable.



Center straight Rib block

- Stability at straight
- Handling

Non penetrating sipes  
Optimized the stiffness of block

- Silent
- Stability at corner

Single edge-cutting

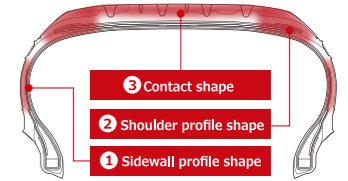
- By partially applying precise edge cutting, we control the occurrence of uneven wear and suppress deterioration of silent performance. In addition, we keep block stiffness too.

Balanced High level silent performance & good handling at high level

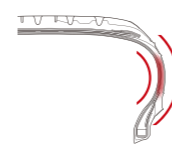
Staggered arrangement of groove & sipes

- Optimized the block stiffness by placing non-penetrating grooves and sipes at precise intervals from the left side and right side of block. It improves steering stability and improves silent performance.

Redesigned profile from zero.  
ADVAN dB V552 special profile for silence.



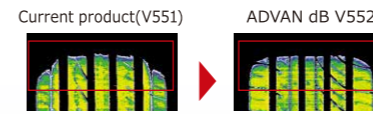
1 Sidewall profile shape



- A pursued profile shape. V552 new sidewall profile absorb various impact force given from road surface & weight of the vehicle by the whole part of sidewall.

To prevent the generation of vibration. Improving silent performance.

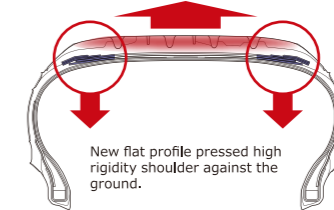
2 Shoulder profile shape



- Redesign Groove arrangement & shoulder shape from zero. Realized smooth contact shape.

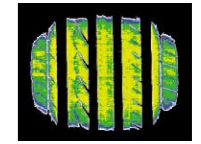
To prevent uneven wear. Keep high level silent performance over a long period of time.

3 Contact shape

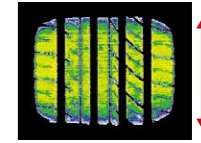


New flat profile pressed high rigidity shoulder against the ground.

Current product(V551)



ADVAN dB V552

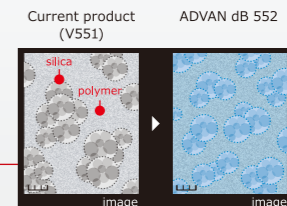


- While keeping high level silent performance, controlled the contact shape and contact length with the ground.

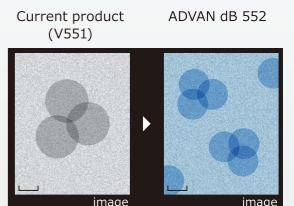
Firm ground realizes improved steering stability. Optimized contact length and improved fuel efficiency.

To enhance Wet-grip & Fuel efficient performance with own nano-compound technology

Improved dispersibility & uniformity of silica



Adopted more finer silica (Fine granular silica)



ADVAN dB V552 Pattern No. V552

Inch	Series	Dimensions	Pattern	RF/XL	Overall Diameter (mm)	Approved Rim Width (inch)
20	40	245/40R20 99W		XL	704	8-9.5
19	40	245/40R19 98W		XL	679	8-9.5
	45	245/45R19 98Y			703	7.5-9
	50	245/50RF19 101W			729	7-8.5
18	35	265/35R18 97W		XL	643	9-10.5
	40	225/40R18 92W		XL	637	7.5-9
		245/40R18 93Y			653	8-9.5
		255/40R18 95W			661	8.5-10
	45	215/45R18 89W			651	7-8
50		225/45R18 91W			659	7-8.5
		235/45R18 94W			669	7.5-9
		245/45R18 96W			677	7.5-9
		235/50R18 97W			693	6.5-8.5
		245/50R18 100W			703	7-8.5
55	225/55R18 98V			705	6-8	
17	45	205/45R17 88W		XL	616	6.5-7.5
		215/45R17 91W		XL	626	7-8
		225/45R17 91W			634	7-8.5
		245/45R17 95W			652	7.5-9
50	215/50R17 95V		XL	648	6-7.5	
	225/50R17 94W			658	6-8	
	235/50R17 96V			668	6.5-8.5	

Inch	Series	Dimensions	Pattern	RF/XL	Overall Diameter (mm)	Approved Rim Width (inch)
17	55	215/55R17 94W			668	6-7.5
		225/55R17 97W			680	6-8
		235/55R17 99V			690	6.5-8.5
60		215/60R17 96H			690	6-7.5
		225/60R17 99H			702	6-8
16	55	195/55R16 87V			620	5.5-7
		205/55R16 91W			632	5.5-7.5
		215/55R16 93W			642	6-7.5
		225/55R16 95W			654	6-8
	60	205/60R16 92V			652	5.5-7.5
65		215/60R16 95V			664	6-7.5
		225/60R16 98W			676	6-8
		235/60R16 100W			688	6.5-8.5
		205/65R16 95H			672	5.5-7.5
		215/65R16 98H			686	6-7.5
15	55	195/55R15 85V			595	5.5-7
	60	185/60R15 84H		≠	603	5-6.5
		195/60R15 88H			615	5.5-7
	65	175/65R15 84H		≠	609	5-6
		185/65R15 88H		≠	621	5-6.5
	195/65R15 91H			635	5.5-7	
	205/65R15 94H			647	5.5-7.5	

XL = Extra Load ≠ = V552A Available size



Emotional handling

# ADVAN FLEVA V701



SPEED RANGE

W/V

- 20 inch
- 19 inch
- 18 inch
- 17 inch
- 16 inch
- 15 inch



Pattern No. V701

## Cool & Attractive Design

A direction pattern offers an attractive and aggressive look.

### Directional tread pattern

Features a directional tread pattern with more edges facing the road surface. A direction pattern offers an attractive and aggressive look.

### Lightning-shaped straight grooves

The main grooves have more edge components through a lightning-shaped design. In addition to the improved traction this delivers excellent hydroplaning resistance.

### Wide sword grooves

The lug grooves have more edge components. The non-penetrating lug groove increases block stiffness and enhances the direct feeling of handling.



### Claw grooves

The claw grooves push aside water at corners. The groove design increases effective groove length.

## Most advanced ADVAN profile.

- Profile adapted from the ADVAN Sport V105.
- Improvement of the steering stability by high speed range requested by European car manufacturer.
- Improvement of optimization of the ground contact.



## Differentiating between the pitch layout for the shoulder and center.

- Increased tread pattern stiffness realizes a more direct feeling to handling.
- Optimized ground contact area.
- Reduces tyre noise, and enhances ride quietness.



## ADVAN dB V552 Pattern No. V701

Inch	Series	Dimensions	RF/XL	Overall Diameter (mm)	Approved Rim Width (inch)	
20	30	255/30R20 92W	XL	662	8.5-9.5	
		275/30R20 97W	XL	674	9-10	
		285/30R20 99W	XL	680	9.5-10.5	
	35	225/35R20 90W	XL	664	7.5-9	
		275/35R20 102W	XL	700	9-11	
		40	245/40R20 99W	XL	704	8-9.5
19	30	255/30R19 91W	XL	637	8.5-9.5	
		265/30R19 93W	XL	643	9-10	
		35	225/35R19 88W	XL	641	7.5-9
	40	235/35R19 91W	XL	647	8-9.5	
		245/35R19 93W	XL	655	8-9.5	
		255/35R19 96W	XL	661	8.5-10	
18	35	275/35R19 100W	XL	675	9-11	
		40	225/40R19 93W	XL	663	7.5-9
		245/40R19 98W	XL	679	8-9.5	
	45	275/40R19 105W	XL	703	9-11	
		225/45R19 96W	XL	685	7-8.5	
		235/45R19 95W		695	7.5-9	
18	35	215/35R18 84W	XL	606	7-8.5	
		225/35R18 87W	XL	615	7.5-9	
		245/35R18 92W	XL	629	8-9.5	
	40	255/35R18 94W	XL	633	8.5-10	
		265/35R18 97W	XL	643	9-10.5	
		275/35R18 99W	XL	649	9-11	
16	45	205/40R18 86W	XL	621	7-8	
		215/40R18 89W	XL	628	7-8.5	
		225/40R18 92W	XL	637	7.5-9	
	50	235/40R18 95W	XL	642	8-9.5	
		245/40R18 97W	XL	653	8-9.5	
		255/40R18 99W	XL	661	8.5-10	
15	45	275/40R18 103W	XL	677	9-11	
		215/45R18 93W	XL	651	7-8	
		225/45R18 95W	XL	659	7-8.5	
	55	245/45R18 100W	XL	677	7.5-9	
		255/45R18 99W		687	8-9.5	
		50	225/50R18 99W	XL	683	6-8

Inch	Series	Dimensions	RF/XL	Overall Diameter (mm)	Approved Rim Width (inch)
18	50	235/50R18 97V		693	6.5-8.5
		235/55R18 100V		715	6.5-8.5
17	40	195/40R17 81W	XL	588	6.5-7.5
		205/40R17 84W	XL	596	7-8
		215/40R17 87W	XL	604	7-8.5
	45	235/40R17 90W	XL	620	8-9.5
		245/40R17 95W	XL	628	8-9.5
		255/40R17 94W		636	8.5-10
16	45	195/45R17 85W	XL	608	6-7.5
		205/45R17 88W	XL	616	6.5-7.5
		215/45R17 91W	XL	626	7-8
	50	225/45R17 94W	XL	634	7-8.5
		235/45R17 97W	XL	640	7.5-9
		205/50R17 93W	XL	638	5.5-7.5
15	45	215/50R17 95W	XL	648	6-7.5
		225/50R17 98W	XL	658	6-8
		205/55R17 91V		658	5.5-7.5
	55	215/55R17 94W		668	6-7.5
		225/55R17 97W		680	6-8
		195/45R16 84W	XL	582	6-7.5
16	45	205/45R16 87W	XL	588	6.5-7.5
		215/45R16 90W	XL	600	7-8
		195/50R16 84V		603	5.5-7
	50	205/50R16 87V		612	5.5-7.5
		225/50R16 92W		632	6-8
		195/55R16 87V		620	5.5-7
15	45	205/55R16 91W		632	5.5-7.5
		215/55R16 93W		642	6-7.5
		225/55R16 95W		654	6-8
	55	165/50R15 73V		547	4.5-6
		195/50R15 82V		577	5.5-7
		205/50R15 86V		587	5.5-7.5
15	55	185/55R15 82V		585	5-6.5
		195/55R15 85V		595	5.5-7
		205/55R15 88V		604	5.5-7.5

XL = Extra Load



Control the Heat,  
Raise the Performance

# ADVAN

## NEOVA AD08 R



SPEED RANGE

W/V/H

- 19 inch
- 18 inch
- 17 inch
- 16 inch
- 15 inch
- 14 inch
- 13 inch

- Dry
- High Grip
- High Speed
- Handling
- Directional

Pattern No. AD08R

### An evolution in wet grip

Evolutions in tread pattern and tyre compounding deliver improved wet performance under a wide variety of conditions.

#### Uniblok shoulders

Using circumferentially continuous single shoulder blocks without any gaps, rigidity at the tread is increased, ensuring a powerful grip and further shortening lap times.



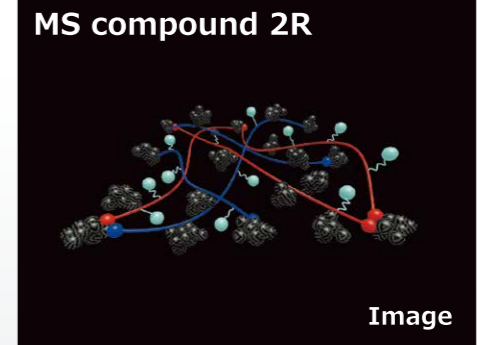
#### Sequential round grooves

Forces from the road surface are spread and dissipated by the round grooves to improve the mileage. The positioning of the grooves is also effective in draining water on wet surfaces.

### MS compound 2R

Lives on in the spirit of YOKOHAMA sports tyres.  
Sustaining a powerful grip using newly developed "MS (Micro Silica) compound 2R"

- **Improved dry grip**  
Increases carbon in the compound
- **Realizes great rigidity and improved resistance to wear**  
Macromolecule blended polymer
- **Ensured wet grip**  
Compound Micro Silica



Image

### ADVAN NEOVA AD08 R Pattern No. AD08R

Inch	Series	Dimensions	Pattern	RF/XL	Overall Diameter (mm)	Approved Rim Width (inch)	
19	30	255/30R19 91W		RF	637	8.5-9.5	
		265/30R19 89W			643	9-10	
		275/30R19 92W			649	9-10	
		295/30R19 100W		RF	661	10-11	
		305/30R19 102W		XL	667	10.5-11.5	
		35	225/35R19 88W		RF	641	7.5-9
35		235/35R19 87W			647	8-9.5	
		245/35R19 89W			655	8-9.5	
		255/35R19 92W			661	8.5-10	
		265/35R19 94W			669	9-10.5	
		275/35R19 96W			675	9-11	
		40	245/40R19 94W			679	8-9.5
18	30	285/30R18 93W			629	9.5-10.5	
		295/30R18 94W			635	10-11	
		35	255/35R18 90W			635	8.5-10
35		265/35R18 93W			643	9-10.5	
		40	215/40R18 89W		XL	628	7-8.5
		225/40R18 88W			637	7.5-9	
40		235/40R18 91W			645	8-9.5	
		245/40R18 93W			653	8-9.5	
		255/40R18 95W			661	8.5-10	
		265/40R18 101W		RF	669	9-10.5	
		45	215/45R18 89W			651	7-8
		225/45R18 91W			659	7-8.5	
45		245/45R18 96W			677	7.5-9	

XL = Extra Load  
RF = Reinforced  
▽ = AD07 Available size

Inch	Series	Dimensions	Pattern	RF/XL	Overall Diameter (mm)	Approved Rim Width (inch)		
17	40	215/40R17 83W			604	7-8.5		
		235/40R17 90W			620	8-9.5		
		245/40R17 91W			628	8-9.5		
		255/40R17 94W			636	8.5-10		
45		205/45R17 84W			616	6.5-7.5		
		215/45R17 87W			626	7-8		
		225/45R17 91W			634	7-8.5		
		235/45R17 94W			644	7.5-9		
50		245/45R17 95W			652	7.5-9		
		205/50R17 89W			638	5.5-7.5		
		16	45	205/45R16 83W			590	6.5-7.5
16	45	215/45R16 86W			600	7-8		
		225/45R16 89W			608	7-8.5		
		50	205/50R16 87W			612	5.5-7.5	
50		225/50R16 92V			632	6-8		
		55	205/55R16 91V			632	5.5-7.5	
		15	50	195/50R15 82V			577	5.5-7
15	50	205/50R15 86V			587	5.5-7.5		
		55	185/55R15 82V			585	5-6.5	
		195/55R15 85V			595	5.5-7		
60		205/60R15 91H	▽		627	5.5-7.5		
		14	55	165/55R14 72V	▽		538	4.5-6
		60	175/60R14 79H	▽		566	5-6	
14	60	185/60R14 82H	▽		578	5-6.5		
		195/60R14 86H	▽		590	5.5-7		
		13	60	155/60R13 70H	▽		516	4.5
13	60	165/60R13 73H	▽		528	4.5-6		



All New Ultimate Street Sport Tyre

# ADVAN A052



SPEED RANGE (Y)/Y/W/V

20 inch 18 inch 17 inch 16 inch 15 inch 14 inch



Pattern No. A052

## Asymmetric tread pattern

### Adopting Mound-Profile

For controlling the contact pressure of each block. ADVAN A052 is adopting "Mound-Profile" same like ADVAN Sport V105.

Balancing wet performance with the stability in the high speed area.



### High-rigidity Tread Rib

Locating 2 main grooves at in-side, we realize the expansion of the contact area of the out-side.

Delivering powerful cornering capability.

### Straight Thin Groove

Locating a straight thin groove in the outside part where receive big pressure in the corner.

Enhance efficiently dissipate heat. Preventing time-drop.

### Two Straight Grooves

By locating 2 main straight grooves in the in-side.

Enhance straight-line stability. And superior anti-hydroplaning.

## All new Sport Compound. Specially Developed for A052.

Extreme Grip (Dry&Wet)

MS Technology

Ultra High level combination of each technology.

Fuel Efficiency

BluEarth Technology

## Positioning Map & Target User

### Sport Performance

High Grip / Circuit / Lap Time



### Sport Performance

High Grip / Circuit / Lap Time



## ADVAN A052 Pattern No. A052

Inch	Series	Dimensions	RF/XL	Overall Diameter (mm)	Approved Rim Width (inch)
20	35	285/35ZR20 (104Y)	XL	708	9.5-11
	40	255/40ZR20 (101Y)	XL	712	8.5-10
18	30	295/30R18 98Y	XL	637	10-11
		315/30R18 98Y	XL	649	10.5-11.5
	35	225/35R18 87Y	XL	615	7.5-9
		255/35R18 94Y	XL	637	8.5-10
		265/35R18 97Y	XL	643	9-10.5
		295/35R18 103Y	XL	666	10-11.5
40	225/40R18 92Y	XL	637	7.5-9	
	235/40R18 95Y	XL	647	8-9.5	
	245/40R18 97Y	XL	653	8-9.5	
	255/40R18 99Y	XL	661	8.5-10	
	265/40R18 101Y	XL	672	9-10.5	
	275/40R18 103Y	XL	677	9-11	
45	235/45R18 98Y	XL	669	7.5-9	
	265/45R18 104Y	XL	695	8.5-10	
	17	40	205/40R17 84W	XL	596
40		215/40R17 87W	XL	604	7-8.5

Inch	Series	Dimensions	RF/XL	Overall Diameter (mm)	Approved Rim Width (inch)
17	40	245/40R17 95W	XL	628	8-9.5
		255/40R17 98W	XL	636	8.5-10
	45	205/45R17 88W	XL	616	6.5-7.5
16	45	215/45R17 91W	XL	626	7-8
		225/45R17 94W	XL	634	7-8.5
		235/45R17 97W	XL	647	7.5-9
		195/45R16 84W	XL	582	6-7.5
		225/45R16 93W	XL	611	7-8.5
15	50	245/45R16 94W		626	7.5-9
		195/50R16 88W	XL	603	5.5-7
		205/50R16 91W	XL	615	5.5-7.5
		225/50R16 96W	XL	632	6-8
		205/55R16 94W	XL	632	5.5-7.5
15	50	195/50R15 86V	XL	577	5.5-7
		205/50R15 89V	XL	587	5.5-7.5
		225/50R15 95V	XL	607	6-8
		55	195/55R15 89V	XL	595
14	55	185/55R14 80V		560	5-6.5

XL = Extra Load







Grip the Earth

# BluEarth-Es ES32



SPEED RANGE

W/V/H/T

18 inch 17 inch 16 inch 15 inch 14 inch 13 inch



Pattern No. ES32

## The all new Powerful and Comfortable Tread Design

### Extra Powerful Profile

High rigidity and tough, Anti-uneven wear

### Multiple Powerful Shoulder

Combination of deep lugs and sipes  
Stability, Evacuation, Anti-uneven wear

### 5 Pitch Tread Pattern

Low pattern noise, Anti-uneven wear



### Lightning Groove

High rigidity and proper edge volume  
Safety, Drainage on Wet roads

### Wide Straight Grooves

Anti-Hydro, Water draining on Wet braking  
Straight driving and handling

Simple and Powerful shoulder block design delivers reliable grip and excellent durability.



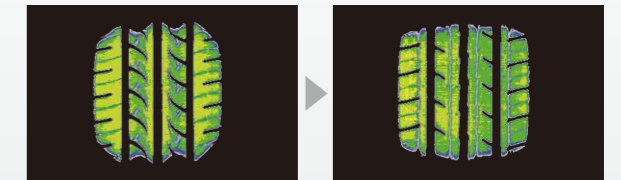
Optimised tread design adopted for each size width.



ES32 standard design WIDTH: 145-215 ES32A wide-design WIDTH: 225 and more

The all new Powerful and Comfortable Tread Design

Contact pressure homogenization and improvement of uneven wear.



Current standard tyre AE01 BluEarth-Es ES32

### BluEarth-Es ES32 Pattern No. ES32

Inch	Series	Dimensions	Pattern	RF/XL	Overall Diameter (mm)	Approved Rim Width (inch)
18	40	225/40R18 92W	❖	XL	637	7.5-9
		235/40R18 95W		XL	645	8-9.5
17	40	205/40R17 84V		XL	596	7-8
		215/40R17 87V		XL	604	7-8.5
		245/40R17 91V	❖		628	8-9.5
		205/45R17 84V			616	6.5-7.5
45		215/45R17 91V		XL	626	7-8
		225/45R17 94V	❖	XL	634	7-8.5
		235/45R17 97V	❖	XL	644	7.5-9
		215/50R17 95V		XL	648	6-7.5
50		225/50R17 94V	❖		658	6-8
		215/55R17 94V			668	6-7.5
16	45	195/45R16 80V			582	6-7.5
		205/45R16 83V			590	6.5-7.5
		195/50R16 84V			602	5.5-7
		205/50R16 87V			612	5.5-7.5
55		185/55R16 83V			610	5-6.5
		195/55R16 87V			620	5.5-7
		205/55R16 91H			632	5.5-7.5
		205/55R16 91V			632	5.5-7.5
60		215/55R16 93H			642	6-7.5
		215/55R16 97V		XL	642	6-7.5
		225/55R16 95V	❖		654	6-8
		175/60R16 82H			616	5-6
50		195/60R16 89H			640	5.5-7
		205/60R16 92H			652	5.5-7.5
		215/60R16 95H			664	6-7.5
		215/60R16 99H		XL	664	6-7.5
215/60R16 99V				XL	664	6-7.5
		225/60R16 98V	❖		676	6-8
65		205/65R16 95H			672	5.5-7.5
15	50	195/50R15 82V			577	5.5-7
		175/55R15 77V			573	5-6
55		185/55R15 82H			585	5-6.5
		185/55R15 82V			585	5-6.5
		195/55R15 85H			595	5.5-7
		195/55R15 85V			595	5.5-7

Inch	Series	Dimensions	Pattern	RF/XL	Overall Diameter (mm)	Approved Rim Width (inch)
15	60	155/60R15 74H			567	4.5-5.5
		165/60R15 77H			579	4.5-6
		175/60R15 81H			591	5-6
		185/60R15 84H			603	5-6.5
185/60R15 88H				XL	603	5-6.5
		195/60R15 88H			615	5.5-7
		205/60R15 91H			627	5.5-7.5
		145/65R15 72H			569	4-5
65		175/65R15 84H			609	5-6
		185/65R15 88H			621	5-6.5
		185/65R15 88T			621	5-6.5
		195/65R15 91H			635	5.5-7
195/65R15 91T					635	5.5-7
		195/65R15 91V			635	5.5-7
		195/65R15 95V		XL	635	5.5-7
		205/65R15 94H			647	5.5-7.5
205/65R15 99H		XL	647	5.5-7.5		
14	55	165/55R14 72H			538	4.5-6
		165/60R14 75T			554	4.5-6
		185/60R14 82H			578	5-6.5
		195/60R14 86H			590	5.5-7
65		155/65R14 75T			558	4.5-5.5
		165/65R14 79T			570	4.5-6
		175/65R14 82H			584	5-6
		175/65R14 82T			584	5-6
185/65R14 86H					596	5-6.5
		185/65R14 86T			596	5-6.5
		195/65R14 89H			610	5.5-7
		165/70R14 81T			588	4-5.5
70		165/70R14 85T		XL	588	4-5.5
		175/70R14 84H			602	4.5-6
		175/70R14 84T			602	4.5-6
		185/70R14 88H			616	4.5-6
185/70R14 88T					616	4.5-6
		195/70R14 91H			630	5-6.5
13	70	175/70R13 82T			576	4.5-6

XL = Extra Load ❖ = ES32A Available size

A BluEarth grand touring tyre tuned for CUVs & MPVs

# BluEarth RV-02



SPEED RANGE

W/V/H

- 20 inch
- 19 inch
- 18 inch
- 17 inch
- 16 inch
- 15 inch

- Wet
- Silence
- Handling
- Comfort
- Mileage
- Fuel Saving

Pattern No. RV02

## Anti-wobble and low noise

Exclusively developed asymmetric pattern.

### Twin Power Ribs

- Provides highly stable handling
- Diagonally cut grooves improve water-drainage performance

### Power Inside Shoulder

- Provides highly stable handling
- Reduces uneven wear

### Four Straight Grooves

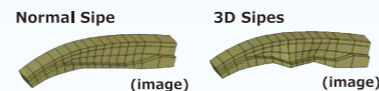
- Improve straight-line driving stability
- Excellent hydroplaning resistance

### Grand Silent Shoulder

- Designed with noise-suppressing grooves
- Reduces uneven wear and wobbling

### 3D Sipes

- Two types of differently shaped sipes disperse tyre noise
- Reduces uneven tread wear



### Silent Edge Grooves

- Grooves cut into the inner sides of the ribs reduce the pass by noise

## Dimple and smooth shoulder design



## Anti-uneven wear

Mound Profile

### [Our standard tyres]

pressure is applied disproportionately to both sides of the ribs, which leads to uneven wear.



### [BluEarth RV-02]

evenly distributed contact pressure helps prevent uneven wear.



## BluEarth RV-02 Pattern No. RV02

Inch	Series	Dimensions	RF/XL	Overall Diameter (mm)	Approved Rim Width (inch)
20	35	245/35R20 95W	XL	680	8-9.5
	40	245/40R20 99W	XL	704	8-9.5
19	40	225/40R19 93W	XL	663	7.5-9
		245/40R19 98W	XL	679	8-9.5
45		225/45R19 96W	XL	685	7-8.5
		245/45R19 98W		703	7.5-9
55		225/55R19 99V		731	6-8
18	45	215/45R18 93W	XL	651	7-8
		225/45R18 95W	XL	659	7-8.5
50		215/50R18 92V		673	6-7.5
		225/50R18 95V		683	6-8
55		235/50R18 97V		693	6.5-8.5
		215/55R18 99V	XL	693	6-7.5
60		225/55R18 98V		705	6-8
		235/55R18 100V		715	6.5-8.5
65		225/60R18 100V		727	6-8
		235/60R18 107W	XL	739	6.5-8.5
17	45	215/45R17 91W	XL	626	7-8
	50	215/50R17 95V	XL	648	6-7.5

Inch	Series	Dimensions	RF/XL	Overall Diameter (mm)	Approved Rim Width (inch)
17	55	205/55R17 91V		658	5.5-7.5
		215/55R17 94V		668	6-7.5
60	60	225/55R17 97W		680	6-8
		235/55R17 103W	XL	690	6.5-8.5
65	65	215/60R17 96H		690	6-7.5
		225/60R17 99H		702	6-8
16	60	235/60R17 102V		714	6.5-8.5
		195/60R16 89H		640	5.5-7
65	65	215/65R17 99V		712	6-7.5
		225/65R17 106V	XL	724	6-8
15	65	235/65R17 108V	XL	738	6.5-8.5
		205/60R16 92H		652	5.5-7.5
65	65	215/60R16 95H		664	6-7.5
		205/65R16 95H		672	5.5-7.5
15	65	215/65R16 98H		686	6-7.5
		195/65R15 91H		635	5.5-7
65	65	205/65R15 94H		647	5.5-7.5
		215/65R15 96H		661	6.0-7.0

XL = Extra Load



**NEW**

The all new Performance A/S for Crossover SUV

# GEOLANDAR X-CV



SPEED RANGE

W

- 22 inch
- 21 inch
- 20 inch
- 19 inch
- 18 inch

ON Road



Wet



Silence



Comfort



Mileage



Fuel Saving

Pattern No. G057

## Tread Pattern technology

New asymmetric pattern contributes to below performance.

### Asymmetric pattern

Asymmetric pattern -3 rib design and In/Out shoulder block

- WET
- Snow
- Low Noise

### 4 wide straight groove

4 Wide straight groove effects Wet and Hydroplaning

- WET

Benefit

- Better traction and noise
- Traction at slippery surface

### 2-3D Combination Sipes

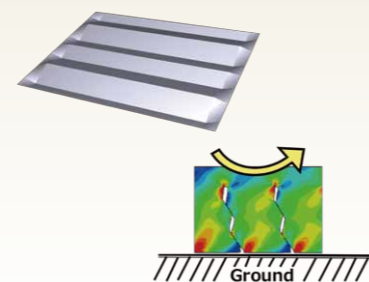
2D,3D Combination Sipes are good for traction and Mileage

- WET
- Snow



■ 2D sipe ■ 3D sipe

### 3D sipes



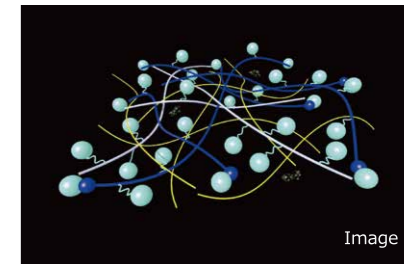
Benefit

- Better wet and snow traction
- Better mileage

## Compound Technology

The feature of Tread compound is good performance balance wet and snow.

- Micro Silica Keeps stability at dry performance
- Silica End-locked polymer is not only improving silica dispersion for wet performance but also keeping compound soft for good snow performance. Additionally this polymer reduce energy loss of compound for Rolling Resistance.



Image

Benefit

- Wet and Snow performance
- Low Rolling resistance

## Side design



- Dented logo
- Sidewall 2PLY construction

Benefit

- Even Wear
- Long Mileage

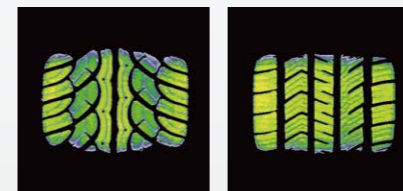
All sizes are Black Letter



## Profile and Contact Shape

Wide and flat contact shape- Even wear Better Mileage.

Image



PARADA Spec-X GEOLANDAR X-CV

Benefit

- Even Wear
- Long Mileage

## 5 Pitch Variation

5 Pitch Variation block enable lower noise.

5 Pitch Variation



Benefit

- Lower noise

### GEOLANDAR X-CV

Pattern No. G057

Inch	Series	Dimensions	RF/XL	Side	Overall Diameter (mm)	Approved Rim Width (inch)	
22	40	265/40R22 106W	XL	BL	771	9-10.5	
		275/40R22 108W	XL	BL	779	9-11	
21	35	295/35R21 107W	XL	BL	739	10-11.5	
		40	275/40R21 108W	XL	BL	753	9-11
		295/40R21 111W	XL	BL	769	10-11.5	
45	275/45R21 104W			BL	771	8.5-10	
		XL	BL	781	8.5-10.5		
20	40	275/40R20 106W	XL	BL	728	9-11	
		45	235/45R20 100W	XL	BL	720	7.5-9
		255/45R20 105W	XL	BL	738	8-9.5	
		265/45R20 108W	XL	BL	746	8.5-10	
		275/45R20 110W	XL	BL	756	8.5-10.5	

Inch	Series	Dimensions	RF/XL	Side	Overall Diameter (mm)	Approved Rim Width (inch)	
20	50	255/50R20 109W	XL	BL	764	7-9	
		265/50R20 111W	XL	BL	774	7.5-9.5	
		275/50R20 113W	XL	BL	784	7.5-9.5	
55	255/55R20 110W			BL	788	7-9	
		XL	BL	695	7.5-9		
19	45	235/45R19 99W	XL	BL	695	7.5-9	
		50	255/50R19 107W	XL	BL	739	7-9
		265/50R19 110W	XL	BL	749	7.5-9.5	
55	235/55R19 105W			BL	741	6.5-8.5	
		XL	BL	763	7-9		
		275/55R19 111W		BL	785	7.5-9.5	
		XL	BL	737	7-9		
18	55	255/55R18 109W	XL	BL	737	7-9	

XL = Extra Load BL = Black Letter



**NEW**

Extreme Mud Terrain Radial

**GEOLANDAR**

**X-MT**



SUV

SPEED RANGE

N/Q

20  
inch

17  
inch

16  
inch

OFF Road



Mileage



Durability

Pattern No. G005

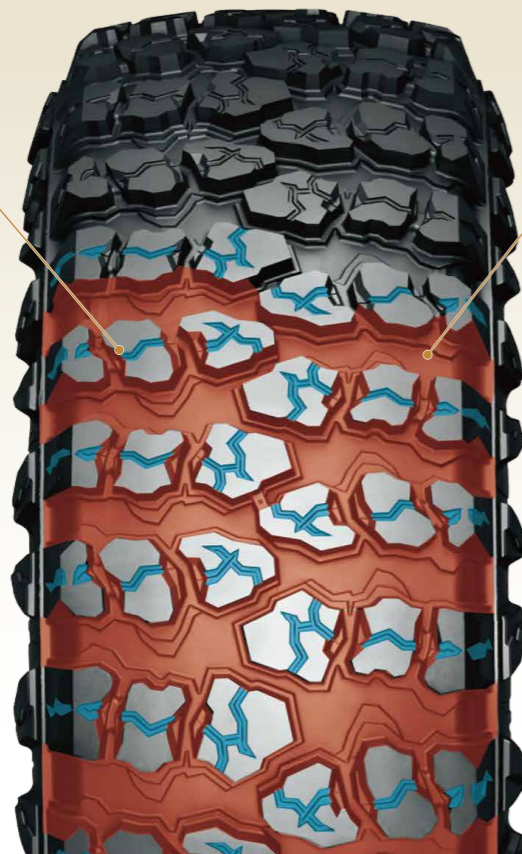
## Wide Lug Groove and Recess in Sipes

### Benefit

- Extreme off road traction
- Traction of slippery surface

### Recess in Sipes

Recess in Sipes is YOKOHAMA key technology from A/T-S and Super Digger V2.



### Wide Lug Groove

Wide Lug Groove satisfied with Extreme Off Road Traction.



## "Nature ROCK concept" Tread Pattern

New aggressive Block Pattern contribute to Extreme Off Road performance.



Nature Rock Concept Design

Symmetric tread pattern



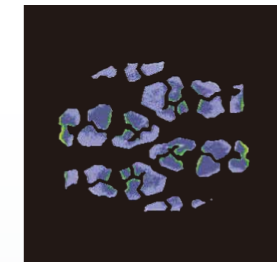
## Profile and Contact Shape

Extra Wide contact shape : Better off road traction and Mileage.

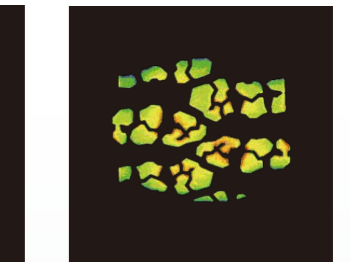
### Benefit

- Long Mileage
- Better Traction

GEOLANDAR X-MT



Partial Load



Image

Full Load

## Construction

Extra Tick sidewall and protector  
Unti-side cut performance

Extra Wide Tread

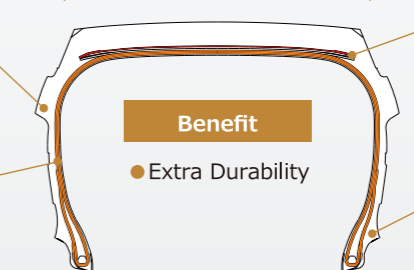
Nylon Full Cover  
A nylon full cover improves tread area damage.

3PLY construction

### Benefit

- Extra Durability

Rim protector



GEOLANDAR X-MT

Pattern No. G005

Inch	Series	Dimensions	Side	Overall Diameter (mm)	Approved Rim Width (inch)
20		35X12.50R20 LT 121Q	RBL	877	8.5-11
17		35X12.50R17 LT 121Q	RBL	877	8.5-11
		37X13.50R17 LT 121Q	RBL	928	8.5-11

Inch	Series	Dimensions	Side	Overall Diameter (mm)	Approved Rim Width (inch)
17		40X13.50R17 LT 121Q	RBL	1004	8.5-11
16		7.00R16C 108/106N	RBL	778	4.5-6
		7.50R16C 116/114N	RBL	802	5-6.5

RBL = Raised Black Letter



Long-lasting comfort, everywhere you go.

# GEOLANDAR H/T G056



SPEED RANGE

V/H/T/S

- 22 inch
- 21 inch
- 20 inch
- 19 inch
- 18 inch
- 17 inch
- 16 inch
- 15 inch

ON Road  
Pickup Truck

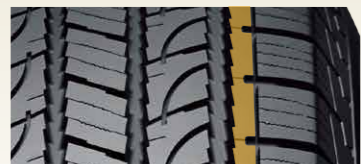
Wet Comfort Mileage

Pattern No. G056

## Realizes 13% improved handling performance

For handling performance, the yaw angle at lane change has been lowered by 13%. YOKOHAMA achieved this by enhancing tread pattern stiffness through an interlocking shoulder block and 3-D sipes. This means stable handling even with SUVs / Pick-ups, which often carry baggage.

Interlocking shoulder block



3-D sipes

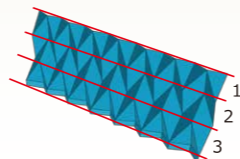
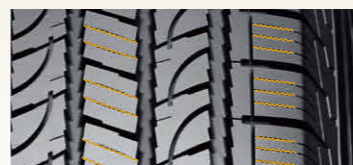


Image of 3-D sipe structure

## Pattern noise is 0.6dB lower

A five-pitch variation reduces disturbing noise, which interrupts a comfortable driving experience.

Image of five-pitch variation



## Achieves 3% shorter distance in terms of wet braking performance

A newly developed tread pattern design with four main grooves improves drainage performance.

Deep depth four main grooves



GEOLANDAR H/T G056

Pattern No. G056

Inch	Series	Dimensions	Pattern	RF/XL	Side	Overall Diameter (mm)	Approved Rim Width (inch)		
22	45	285/45R22 114H		XL	RBL	815	9-10.5		
21	50	275/50R21 113V		XL	RBL	809	7.5-9.5		
20	50	285/50R20 112V			RBL	794	8-10		
	55	275/55R20 113H			BL	810	7.5-9.5		
	60	245/60R20 107H			RBL	802	7-8.5		
19	60	P275/60R20 114H			RBL	838	7.5-9.5		
		P255/60R19 108H			RBL	789	7-9		
18	60	P245/60R18 104H			RBL	751	7-8.5		
		255/60R18 108H	■		RBL	763	7-9		
		255/60R18 112V		XL	RBL	763	7-9		
		P255/60R18 107H	◆		RBL	763	7-9		
		265/60R18 110H			RBL	775	7.5-9.5		
		P265/60R18 109H			RBL	775	7.5-9.5		
		275/60R18 113H			RBL	787	7.5-9.5		
		285/60R18 116H			RBL	799	8-10		
		65	P255/65R18 109T				RBL	789	7-9
			P265/65R18 112T				RBL	801	7.5-9.5
			P275/65R18 114T				OWL	815	7.5-9.5
P255/70R18 112H					RBL	815	6.5-8.5		
17	65	265/70R18 116H	≡		RBL	829	7-9		
		P265/70R18 114S			OWL	829	7-9		
		P245/65R17 105T			RBL	750	7-8.5		
		255/65R17 114H			XL	RBL	764	7-9	
		P255/65R17 108T			OWL	764	7-9		
		265/65R17 112H			RBL	776	7.5-9.5		
		P265/65R17 110T			OWL	776	7.5-9.5		
70	65	275/65R17 115H			RBL	790	7.5-9.5		
		285/65R17 116H			RBL	802	8-10		
		P255/70R17 108T			XL	RBL	748	6-7.5	
		P235/70R17 108T			XL	OWL	762	6-8	

Inch	Series	Dimensions	Pattern	RF/XL	Side	Overall Diameter (mm)	Approved Rim Width (inch)		
17	70	P245/70R17 108H			OWL	776	6.5-8		
		P255/70R17 110T			OWL	790	6.5-8.5		
		265/70R17 115S			RBL	804	7-9		
16	65	P265/70R17 113T			OWL	804	7-9		
		255/65R16 109H			RBL	738	7-9		
		P255/65R16 106T			OWL	738	7-9		
		70	P235/70R16 104T			OWL	736	6-8	
245/70R16 111H				XL	RBL	750	6.5-8		
15	70	P245/70R16 106H			OWL	750	6.5-8		
		255/70R16 111H			RBL	764	6.5-8.5		
		P255/70R16 109T			OWL	764	6.5-8.5		
		P265/70R16 111T			OWL	778	7-9		
		265/70R16 112H			RBL	778	7-9		
		275/70R16 114H			RBL	792	7-9		
		75	P225/75R16 106T			XL	RBL	744	6-7.5
			P235/75R16 109T			XL	OWL	758	6-8
			P245/75R16 109T			OWL	774	6.5-8	
		15	70	265/75R16 116H			RBL	804	7-9
P265/75R16 114T					OWL	804	7-9		
215/70R15 98H					RBL	683	5.5-7		
255/70R15 108H					RBL	739	6.5-8.5		
255/70R15C 112/110S					RBL	739	6.5-8.5		
265/70R15 112H					RBL	753	7-9		
75	235/75R15 109H					XL	RBL	733	6-8
	P235/75R15 108T			XL	OWL	733	6-8		
80	15	215/80R15 102S			RBL	725	5.5-7		
		30X9.50R15 104S			OWL	750	6.5-7.5		
		31X10.50R15 109S			OWL	775	7-8.5		

XL = Extra Load  
 ■ = G056A Available size and this is OE  
 ◆ = G056B Available size and this is OE  
 ≡ = G051 Available size  
 BL = Black Letter  
 RBL = Raised Black Letter  
 OWL = Outlined White Letter



Dynamic in Comfort and Silence

# GEOLANDAR SUV



SPEED RANGE

V/H/T

- 20 inch
- 19 inch
- 18 inch
- 17 inch
- 16 inch
- 15 inch

ON Road



Wet



Comfort



Mileage

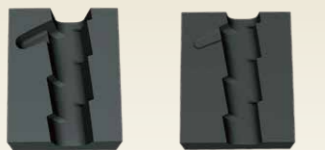


Fuel Saving

Pattern No. G055

### Zig-zag grooves

- Better wet performance
- Reduced external vehicle noise



New tyre With 50% wear

### Geometrically optimized sipes

- Better wet performance
- Reduced noise

### 4 wide straight grooves

- Better wet performance
- Aquaplaning performance

### Dolphin grooves

- Better wet performance

### Cross supporting shoulder blocks

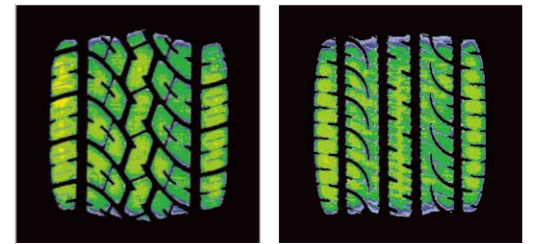
- Better wet performance
- Better handling performance
- Reduced noise



## Fuel-efficient profile that minimizes uneven wear

The profile employed suppresses tyre distortion to provide even road contact area and reduce energy loss when driving. This helps minimize uneven wear.

Image



GEOLANDAR H/T-S

GEOLANDAR SUV

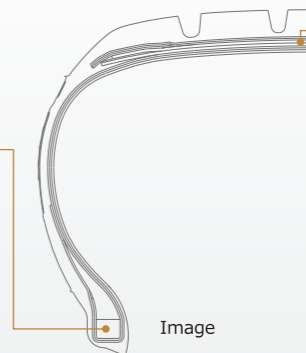
## High-rigidity profile enabling exceptional handling performance

Enhancing the strength of the sidewall rubber for tall SUV tyres and reinforcing the shoulder part of the tread has increased the stability of the road contact area of the tyre. The high rigidity enables superior handling and peace-of-mind at high speeds.

## High-elasticity filler exclusively for the GEOLANDAR SUV brand tyre

Steering stability Comfort

Employs high-elasticity filler for exceptional flexibility that meets the needs of SUV tyres with large section width.



Image

## Nylon full cover

Reduced noise Steering stability

A nylon cover layer has been employed for the entire upper portion of the belt material. This helps stop the belt from slipping up and improves steering stability and quietness at high speeds.

### GEOLANDAR SUV Pattern No. G055

Inch	Series	Dimensions	Pattern	RF/XL	Side	Overall Diameter (mm)	Approved Rim Width (inch)
20	50	245/50R20 102V			BL	754	7-8.5
		265/50R20 111V		XL	BL	774	7.5-9.5
		235/55R20 102V			BL	766	6.5-8.5
19	50	235/50R19 99V			BL	719	6.5-8.5
		225/55R19 99V			BL	731	6-8
		235/55R19 101V			BL	741	6.5-8.5
18	50	245/55R19 103V			BL	753	7-8.5
		215/50R18 92V			RBL	673	6-7.5
		225/55R18 99V		XL	BL	693	6-7.5
18	55	225/55R18 98V			BL	705	6-8
		235/55R18 100V			BL	715	6.5-8.5
		255/55R18 109V		XL	BL	737	7-9
18	60	225/60R18 100H			BL	727	6-8
		235/60R18 107V		XL	BL	739	6.5-8.5
		245/60R18 105H			BL	751	7-8.5
18	65	225/65R18 103H			BL	749	6-8
		235/65R18 106H			BL	763	6.5-8.5
		P235/65R18 104T			BL	763	6.5-8.5
17	55	215/55R17 94V			BL	668	6-7.5
		225/55R17 97V			BL	680	6-8
		235/55R17 99H			BL	690	6.5-8.5

Inch	Series	Dimensions	Pattern	RF/XL	Side	Overall Diameter (mm)	Approved Rim Width (inch)
17	60	215/60R17 96H			BL	690	6-7.5
		225/60R17 99H			BL	702	6-8
		235/60R17 102V			BL	714	6.5-8.5
17	65	255/60R17 106H			BL	738	7-9
		225/65R17 102H			BL	724	6-8
		225/65R17 106H		XL	BL	724	6-8
17	70	235/65R17 108V		XL	BL	738	6.5-8.5
		245/65R17 107H			BL	750	7-8.5
		215/70R17 101H			BL	734	5.5-7
16	60	215/60R16 95H			BL	664	6-7.5
		235/60R16 104V		XL	BL	688	6.5-8.5
		215/65R16 98H			BL	686	6-7.5
16	65	215/65R16 98H			BL	686	6-7.5
		225/65R16 100H			BL	698	6-8
		215/70R16 100H			BL	708	5.5-7
16	70	225/70R16 103H			BL	722	6-7.5
		235/70R16 106H			BL	736	6-8
		205/70R15 96H			BL	669	5-7
15	70	225/70R15 100H			BL	697	6-7.5

XL = Extra Load  
 :: = G055E Available size and this is OE  
 : = G055G Available size and this is OE  
 BL = Black Letter  
 RBL = Raised Black Letter







AMAZING TRACTION

GEOLANDAR M/T 6003



SPEED RANGE

N/Q

- 20 inch
- 18 inch
- 17 inch
- 16 inch
- 15 inch

OFF Road



Silence Anti-uneven wear Mileage Durability

Pattern No. G003

Tread Pattern

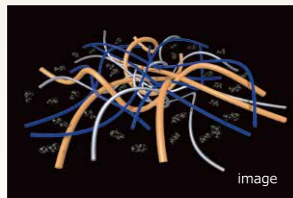
New aggressive Block Pattern contribute to better performance.

Optimized Lug Groove

Traction

Tread Compound

New High Hardness Compound contribute to longer mileage, Unti-cut & Chipping, Better Handling and off road traction.



Benefit

- Wear resistance
- Cut & Chipping resistance
- Handling and Off road traction



Optimized Sipes

Traction

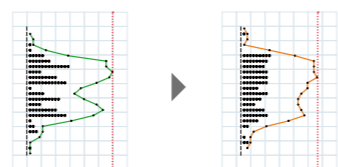
Mud and Stone Ejector

Off Road

Low Noise

Pitch variation positively works for pattern noise because of dispersed pitch and low peak noise.

New Pitch Variation



GEOLANDAR M/T+ GEOLANDAR M/T 6003

Side design

Tread design extended to Side : Appearance, Durability and Off road traction.

AGGRESSIVE SIDE BLOCK



Benefit

- Appearance
- Off road traction
- Durability

All sizes are Raised Black Letter

INTEGRATED DESIGN CONCEPT



Profile & Construction

High-rigidity 3-ply Construction

Ensuring excellent steering stability and side-cut resistance.

Special sidewall construction

Enhancing steering stability and side-cut resistance.

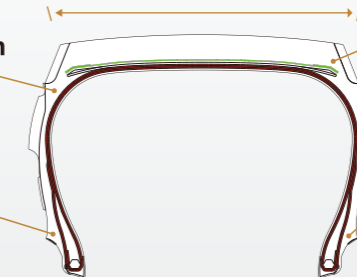
Wide tread

Full Nylon Cover

Preventing damage from reaching the bottom of the groove, improving durability.

Large-size Rim Protector

Protecting the wheels and keeping mud from getting out between the tires and rims.



GEOLANDAR M/T 6003

Pattern No. G003

Inch	Series	Dimensions	Pattern	Side	Overall Diameter (mm)	Approved Rim Width (inch)	
20	55	LT275/55R20 120/117Q		RBL	810	7.5-9.5	
		LT295/55R20 123/120Q		RBL	832	8-10	
		LT305/55R20 121/118Q		RBL	844	8.5-11	
	60	LT295/60R20 126/123Q		RBL	862	8-10	
		LT315/60R20 125/122Q		RBL	886	8.5-11	
		LT275/65R20 126/123Q		RBL	866	7.5-9.5	
	65	33X12.50R20 LT 114Q		RBL	826	8.5-11	
		35X12.50R20 LT 121Q		RBL	877	8.5-11	
		37X12.50R20 LT 126Q		RBL	928	8.5-11	
		37X13.50R20 LT 127Q		RBL	928	8.5-11	
18		65	LT275/65R18 123/120Q		RBL	815	7.5-9
		LT285/65R18 125/122Q		RBL	827	8-10	
70	LT275/70R18 125/122Q		RBL	843	7-9		
	LT285/70R18 127/124Q		RBL	857	7.5-9.5		
	LT295/70R18 129/126Q		RBL	871	7.5-10		
	LT305/70R18 126/123Q		RBL	885	8.5-10		
	33X12.50R18 LT 118Q		RBL	826	8.5-11		
	35X12.50R18 LT 123Q		RBL	877	8.5-11		
	38X13.50R18 126Q	Å	RBL	953	8.5-11.5		
	40X13.50R18 122Q	Å	RBL	1004	8.5-11.5		
17	65	LT225/65R17 107/103Q		RBL	724	6-8	
	70	LT265/70R17 121/118Q		RBL	804	7-8.5	
	LT285/70R17 121/118Q		RBL	832	7.5-9		
	LT295/70R17 121/118Q		RBL	846	7.5-10		
75	LT245/75R17 121/118Q		RBL	800	6.5-7.5		
	LT255/75R17 111/108Q		RBL	814	6.5-8.5		
	LT285/75R17 121/118Q		RBL	860	7.5-9.5		
	LT235/80R17 120/117Q		RBL	808	6-7.5		

Inch	Series	Dimensions	Pattern	Side	Overall Diameter (mm)	Approved Rim Width (inch)
17	70	33X12.50R17 LT 120Q		RBL	877	8.5-11
		35X12.50R17 LT 121Q		RBL	953	8.5-11
		37X12.50R17 LT 124Q		RBL	928	8.5-11
		38X13.50R17 119Q	Å	RBL	826	8.5-11
16	70	LT305/70R16 124/121Q		RBL	834	8-9.5
		LT225/75R16 115/112Q		RBL	744	6-7
	75	LT245/75R16 120/116Q		RBL	774	6.5-8
		LT265/75R16 123/120Q		RBL	804	7-8
		LT285/75R16 126/123Q		RBL	834	7.5-9
		LT315/75R16 127/124Q		RBL	878	8-11
85	185/85R16 105/103N LT		RBL	720	4.5-6	
	LT235/85R16 120/116Q		RBL	736	5.5-6.5	
	LT255/85R16 123/120Q		RBL	840	6.5-8	
	205R16C 110/108Q		RBL	806	6-7.5	
15	75	650R16 97/93Q LT		RBL	755	4.5-6
		LT215/75R15 100/97Q		RBL	703	5.5-7
	LT235/75R15 104/101Q		RBL	733	6-7	
	30X 9.50R15 LT 104Q		RBL	750	6.5-8.5	
	31X10.50R15 LT 109Q		RBL	775	7-9	
	32X11.50R15 LT 113Q		RBL	801	8-10	
15	75	33X12.50R15 LT 108Q		RBL	826	8.5-11
		35X12.50R15 LT 113Q		RBL	877	8.5-11

RBL = Raised Black Letter Å = G001C Available size

## BluEarth-Van RY55



SPEED RANGE

H/T/R/S/P/N

- 17 inch
- 16 inch
- 15 inch
- 14 inch
- 13 inch
- 12 inch



Pattern No. RY55

## PARADA Spec-X



SPEED RANGE

V/H

- 24 inch
- 23 inch
- 22 inch
- 20 inch
- 19 inch
- 18 inch
- 17 inch



Pattern No. PA02

### The most long-lasting, tough & efficient Earth-Friendly Van tyre ever

#### The all new Powerful RY55 Tread Design

#### Multiple Triangle Block

High rigidity and proper edge volume Safety, Drainage on Wet roads

#### 3 Pitch Tread Pattern

Low pattern noise, Resists uneven wear



#### Extra Powerful Profile

High rigidity and tough, Resists uneven wear

#### Multiple aggressive Shoulder

Combination of deep lugs and sipes Stability, Evacuation, Resists uneven wear

#### Wide Straight Grooves

Anti-Hydro, Water draining on Wet braking Straight driving and handling

### PARADA Spec-X

Pattern No. PA02

Series	Dimensions	RF/XL	Overall Diameter (mm)	Approved Rim Width (inch)
24 35	305/35R24 112V	RF	824	10-12
	315/35R24 114V	RF	830	10.5-12.5
23 35	285/35R23 107V	RF	784	9.5-11
	255/35R22 99V	RF	737	8.5-10
22 35	265/35R22 102V	RF	745	9-10.5
	285/35R22 106V	RF	759	9.5-11
40	265/40R22 106V	RF	771	9-10.5
	285/40R22 110V	RF	787	9.5-11
45	285/45R22 114V	RF	815	9-10.5
	305/45R22 118V	RF	833	9.5-11.5
20 40	275/40R20 106V	RF	728	9-11
	245/45R20 99V		728	7.5-9
45	255/45R20 105V	RF	738	8-9.5
	275/45R20 110V	RF	756	8.5-10.5
	295/45R20 114V	RF	774	9.5-11

Inch	Series	Dimensions	RF/XL	Overall Diameter (mm)	Approved Rim Width (inch)
20	50	245/50R20 102V		754	7-8.5
		255/50R20 109V	RF	764	7-9
	55	305/50R20 120V	RF	814	8.5-11
		235/55R20 102V		766	6.5-8.5
		275/55R20 117V	RF	810	7.5-9.5
19	55	235/55R19 101V		741	6.5-8.5
18	55	235/55R18 100V		715	6.5-8.5
		60	225/60R18 100H		727
		235/60R18 103V		739	6.5-8.5
		245/60R18 105H		751	7-8.5
17	65	225/65R17 102H		724	6-8

RF = Reinforced

### BluEarth-Van RY55

Pattern No. RY55

Inch	Series	Dimensions	Pattern	Overall Diameter (mm)	Approved Rim Width (inch)
17	55	225/55R17 109/107H		680	6-8
	60	215/60R17C 109/107T		690	6-7.5
		235/60R17C 109/107T		714	6.5-7.5
16	60	195/60R16C 99/97H		640	5.5-7
		215/60R16C 103/101T		664	6-7.5
65		195/65R16C 104/102T		660	5.5-6
		205/65R16C 103/101H		672	5.5-7.5
		205/65R16C 107/105T		672	5.5-7.5
		215/65R16C 106/104T		686	6-7.5
		215/65R16C 109/107T		686	6-7.5
		225/65R16C 112/110T		698	6-7
		235/65R16C 115/113R		712	6.5-7.5
	235/65R16C 121/119R		712	6.5-7.5	
70		215/70R16C 108/106S		708	5.5-7
75		185/75R16C 104/102S		684	5-6
		195/75R16C 107/105T		698	5-6
		195/75R16C 110/108T		698	5-6
		205/75R16C 110/108R		714	5.5-6.5
		205/75R16C 113/111R		714	5.5-6.5

Inch	Series	Dimensions	Pattern	Overall Diameter (mm)	Approved Rim Width (inch)	
16	75	215/75R16C 113/111R		728	5.5-7	
		215/75R16C 116/114R		728	5.5-7	
		225/75R16C 121/120R		744	6-7	
15	65	205/65R15C 102/100T		647	5.5-7.5	
		215/65R15C 104/102T		661	6-7	
		70	195/70R15C 104/102S		655	5-6
			205/70R15C 106/104S		669	5.5-6.5
			215/70R15C 109/107S		683	5.5-7
		225/70R15C 112/110S		697	6-7	
		195R15C 106/104S		690	5-6	
14	65	175/65R14C 90/88T	Y	584	5-5.5	
		175R14C 99/98R	Y	634	4.5-5.5	
		185R14C 102/100S		650	5-6	
		195R14C 106/104S		666	5-6	
13		155R13 90/89P	Y	582	4-5	
		165R13C 94/92P	Y	596	4-5	
		175R13C 97/95P	Y	608	4.5-5.5	
		12	155R12C 88/86N	Y	550	4-5

Y = RY818 Available size

## S.drive

SPEED RANGE

T/V/W/Y

- 17 inch
- 16 inch
- 14 inch



### S.drive

Pattern No. AS01

Inch	Series	Dimensions	OE Mark	RF/XL	Overall Diameter (mm)	Approved Rim Width (inch)
17	35	225/35R17 86Y		RF	590	7.5-9
16	40	195/40R16 80W		RF	562	6.5-7.5
		215/40R16 82T	MO		578	7-8.5

Inch	Series	Dimensions	OE Mark	RF/XL	Overall Diameter (mm)	Approved Rim Width (inch)
16	40	215/40R16 86W		RF	578	7-8.5
		50	175/50R16 77T	MO	582	5-6
14	55	185/55R14 80V			560	5-6.5

RF = Reinforced MO = Original Equipment for Smart







# Basic Tyre Knowledge

## How to Read Tyre Size

**205 / 65 R 15 94H**

1 2 3 4 5 6

**165 / R 13C 94/92P**

1 3 4 11 10 5

**235 / 45 ZR 17 97Y**

1 2 7 4 5 6

**P235 / 70 R 17 108S**

12 1 2 3 4 5 6

**31 X 10.50 R 15 109S**

8 9 3 4 5 6

**LT315 / 75 R 16 113Q**

13 8 2 3 4 5 6



### 1 Nominal section width (mm)

This refers to the width of the tyre excluding design and lettering on the sidewall, etc.

\*Does not include rim guard.

### 2 Aspect ratio (series,%)

This figure indicates the ratio of a tyre's height

Aspect ratio(%)=

Tyre height÷tyre width×100

### 3 Construction code

"R" stands for radial structure.

### 4 Nominal rim diameter (inches)

Refers to the diameter of the wheel rim suitable for the tyre. The term "tyre's inner diameter" is also used.

### 5 Load Index (LI)

An index expressing the maximum load permitted for a tyre under established conditions.

### 6 Speed symbol

This indicates the maximum permissible speed in symbols under established conditions.

### 7 Speed category

(ZR: over240km/h)

### 8 Nominal outside diameter (inches)

### 9 Nominal section width (inches)

### 10 Load Index: Single/Dual

### 11 C: Commercial vehicle

Complies with ETRTO(European tyre regulations).

### 12 P: Passenger car tyre

Complies with TRA(North American tyre regulations).

### 13 LT: Light Truck

Complies with JATMA (Japanese tyre regulations) or TRA(North American tyre regulations).

## Speed Symbol

The speed symbol refers to the maximum speed capability of a tyre. It is only valid for a tyre that is properly inflated and loaded within the limits of the assigned load index.

Speed symbol	Speed(km/h)
N	140
P	150
Q	160
R	170
S	180
T	190
H	210
V	240
W	270
Y	300
(Y)	Over 300

Speed category	Speed(km/h)
ZR	Over240

## Meaning of "BluEarth concept" mark



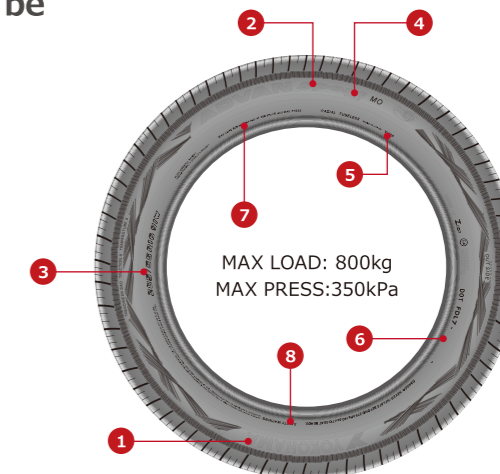
The BluEarth concept mark is imprinted on the side of the tyre together with the product logo. It indicates that the tyre was developed consistently to be "environmentally, humanly and socially friendly."



# Sidewall Information

A variety of information about a tyre appears on its sidewall. Knowing how to identify the markings can be useful when choosing a tyre.

- 1 YOKOHAMA: Manufacture's name
- 2 ADVAN Sport: Brand Name
- 3 205/55R16 91W: Tyre Size Designation
- 4 V105: Tread Pattern Name
- 5 Country of Origin
- 6 Identification Serial Number
- 7 MAX LOAD, MAX PRESS
- 8 Safety Warning



## Asymmetrical tread pattern and specified tyre rotation

Tyres with a directional pattern need to be mounted according to the indications on the sidewalls to ensure maximum performance. Make sure you take note of the directional pattern when mounting the tyre.

### Unidirectional tread pattern



Tread pattern of AS01

### Asymmetrical tread pattern SIDE FACING OUTWARDS (INWARDS)



Tread pattern of V551



Sidewalls indicate whether they should face inwards or outwards.



It is vital to take note of the arrow when rotating tyres to ensure that the tyres are mounted in the correct direction.

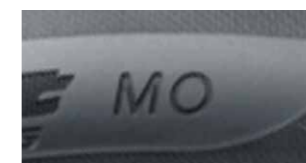


## OE approval mark by automakers

Some tyres may include a mark of approval from a specific automaker on the sidewall. There is no difference in basic performance if the tyres are of the same size and pattern, irrespective of whether the mark is evident or not.



AO is Audi approved mark.



MO is a Mercedes-Benz approved mark.



N-1 and N-0 are Porsche approved mark



LTS is a Lotus approved mark.



# About YOKOHAMA

## TIRE

A wide array of high-quality tires developed, manufactured, and sold by YOKOHAMA are earning users' trust in various aspects of society. These range from passenger car tires that add a splash of color to life to truck and bus tires that support people's daily lives and logistics to off-the-road tires at resource development and construction sites, plus tires used in industrial vehicles as well as in agricultural and forestry machinery.

### Passenger Car Tire

In line with various drivers' preferences, YOKOHAMA boasts a tire lineup that meets a diversity of driving scenarios, including tires for sports cars, luxury sedans, sport utility vehicles and dress-up vehicles as well as studless tires. Passenger car tires, which respond to all kinds of driving needs such as riding comfort, handling performance, environmental features and a quiet ride, are the embodiment of YOKOHAMA's technologies.

### Light Truck Tire

Light truck tires must be able to stand up to a variety of conditions and adapt to a range of delivery and transport needs in urban environments. Combining superior grip on wet surfaces with high durability and wear resistance, these tires offer economical efficiency while remaining environmentally friendly, thereby supporting the logistics of peoples' daily lives.



### Truck & Bus Tire

Truck and bus tires are required to adapt to a wide array of seasonal, surface and other conditions in addition to basic performance such as being economically efficient with high durability and safety. YOKOHAMA supplies a wide variety of truck and bus tires worldwide to meet such requirements. To this end, YOKOHAMA is promoting various theories and technological and material development in pursuing a new era of logistics, beginning with the Maintenance Saving Concept for minimizing uneven wear as well as the "STEM 2" theory, which incorporates into design the behavior and change in tire shape according to load, and the development of a compound that is resilient to chipping and wet rolling.



### Off-Highway Tire

YOKOHAMA has dedicated construction vehicle and industrial vehicle tire plants that produce tires with durability and heat tolerance for global markets. These kinds of tires offer substantial support for machinery used at various mining and construction sites, including ultra-large dump trucks, earth and sand scrapers, wheel loaders for carrying earth and gravel at mining and construction sites and graders for road construction and snow removal. Further, in July 2016, the YOKOHAMA Tire Group bought out Alliance Tire Group B.V. (ATG), an off-highway tire specialist, with the effect of adding new agricultural and forestry machinery-use tires to our product lineup. ATG has three brands: ALLIANCE, GALAXY, and PRIMEX, which enables us to reach more places around the world, primarily the U.S. and Europe. In March of 2017, yet another company was added to the group: Aichi Tire Industries Co., Ltd. (Aichi Tire), a company engaged in the manufacture and sales of industrial vehicle tires. Aichi Tire has earned the trust of consumers as a pioneer in the production of pneumatic cushion tires sold primarily in Japan. YOKOHAMA's medium-term business plan includes strategies to expand the off-highway tire sector as an engine of growth, maximizing the strengths of YOKOHAMA, ATG, and Aichi Tire to forge our optimal business portfolio.

**ATG** BETTER VALUE.  
SMARTER CHOICE.

**AICHI TIRE**

## MULTIPLE BUSINESS

The MB (Multiple Business) Group, YOKOHAMA's diversified business unit, has played significant roles globally over an extended period of time and contributed to the development of various industries such as automobile, oil and gas, mining, construction, aerospace, etc. The MB Group offers a broad range of products including industrial and automotive hoses, couplings, conveyor beltings, marine products, sealing materials, adhesives and aircraft components and more. We continue to strive to provide the best solutions to our customers with innovative technologies and best-in-class quality.

## SPORTS

PRGR is YOKOHAMA's golf products brand. Since its launch in 1983, YOKOHAMA has evolved its golf line over the years under the original concept of golf being "the physical phenomenon of a collision between the club and the ball."

## MOTOR SPORTS



YOKOHAMA participates in a wide range of motorsports events including races and rallies. While achieving a superb legacy in various categories, YOKOHAMA also provides Competition tires to teams in Japan and overseas with excellent results.

Motorsports activities play a vital role in contributing to tire development. The cutting-edge macromolecular and design technologies for tires installed on racing vehicles are being employed in the development of tires sold in the broader market and greatly contribute to improvements to produce high-performance tires. The motorsports arena, marked by fierce competition between the latest technologies, serves as a crucial testing medium for creating tires of the future.



# About YOKOHAMA

## Research and Development

Reliable technology based on world-class research and development is essential for developing and providing YOKOHAMA products that are safe and reliable, while also helping to preserve the environment. At every stage of design, testing and assessment, YOKOHAMA takes a comprehensive multi-faceted approach toward realizing advances in macromolecular and other technologies to make materials and products as beneficial as possible.



### RADIC

RADIC (Research and Development Integrated Center) has been at the core of YOKOHAMA's leading-edge R&D operations since being established in 1991. State-of-the-art instruments such as supercomputers, electron microscopes, ESCA (electron spectroscopy for chemical analysis) systems and a nuclear magnetic resonance spectrometer are used in pursuing materials development and product design and in conducting simulations under various conditions.



### D-PARC

D-PARC (Daigo Proving-ground and Research Center) is YOKOHAMA's comprehensive tyre test course facility that includes a speed oval course, steering and stability track, comfort test track with multiple surfaces made of materials sourced from around the world and handling test track simulating winding road conditions.



### TIRE TEST CENTER OF HOKKAIDO

The Tire Test Center of Hokkaido in Asahikawa City, Hokkaido is a vehicle test course for winter tyres including studless tyres. The sizable grounds, which are roughly four times the size of conventional winter tyre test courses, are equipped with various facilities including: approximately one kilometer snow track, ice track, hill climbing track, snow and ice circle, plus handling track. All in all, this course boasts optimal conditions for real vehicle testing under severe winter conditions for the long period stretching from the end of December through the following February, when temperatures are consistently below freezing.



### TIRE TEST CENTER OF ASIA

TIRE TEST CENTER OF ASIA is a large-scale proving ground that uses peripheral road tracks to recreate general roads found around the world, with the overriding aims of raising quality, strengthening performance evaluations, improving quality and enhancing high-speed driving testing of tyres for passenger cars, light trucks, and trucks and buses. Special test courses and wet test courses simulating various road conditions enable multi-faceted tests covering all aspects of driving ranging from handling stability, fuel economy and durability to noise, vibration and riding comfort. The proving ground was built adjacent to Yokohama Rubber (Thailand) Co., Ltd., a tyre production and sales company in Thailand. This close location enhances the ease of collaboration with production and development divisions and better enables the results of driving and evaluation testing to be applied to the development of new tyres.



### YOKOHAMA TEST CENTER of SWEDEN

The YOKOHAMA TEST CENTER of SWEDEN is a vehicle test course with which we have a long-term rental contract with Arctic Falls for winter tyre testing. There are various test courses on the grounds, all of which are self-contained. Development of passenger car, tyres is conducted here. Temperatures are consistently below freezing over the period of approximately November through April of the following year, enabling winter tyre testing with real vehicles over the long term.



# For Your Comfort & Safety

## Tyre inflation

- Tyre inflation should be done in a safety cage.
- Never inflate beyond 275kPa (2.75bar, 40psi) to seat beads.
- Tyre performance may decline when foreign objects or water enter the tyre. Before mounting a tyre, inspect and remove any foreign objects and water inside of it.
- Periodically drain water from the compressor, otherwise the water may be transferred to the inside of the tyre.
- Before inflating air and attaching the valve cap, make sure that no air is leaking from the valve core, the tyre fits properly on its rim and no air is leaking from around the valve.

## Tyre damage

Never use a tyre under the following conditions and replace tyres immediately:

- If the tread is worn down to the tread wear indicator
- If breaks in the fabric appear
- If cords or wires are exposed

## Point to note when choosing a tyre

- Outer diameter of the wheel should be the same as the inner diameter of the tyre.

## Inspect for foreign objects and damage

- Stones, gravel and other foreign objects stuck in the tyre treads may damage the tyre. Remove foreign objects from the tyre treads.
- Such objects and obstacles in the road as potholes, glass, metal, rocks, wood debris, and kerbstones which could damage a tyre should be safely avoided.

## Break-in period

- Make sure to break new tyres in by driving under 80km/h for no less than 100km in the case of summer tyres.

## Points to note regarding tyre/rim attachment

- Adjust wheel balance to prevent abnormal vibration and uneven wear.
- Mount tyres according to the rotation direction specified on the sidewall as indicated.
- Use a torque wrench to fasten wheel nuts to the specified torque. When using an impact wrench, do not tighten the nuts too tightly. Check with a torque wrench.
- After attaching the wheels to the vehicle and travelling 50-100km, refasten the wheel nuts to the specified torque.
- Make sure the tyre is not touching the vehicle body when you attach it.
- Never mount a tyre on a rim that is damaged or which has been repaired by welding or brazing.
- Do not mix different tyre size designations or constructions on the same axle, except for limited use of temporary spare tyres.
- Tyres should be mounted only by professionally trained persons.

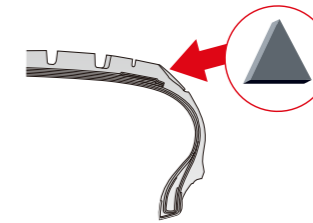
## Important notes on air pressure

- Make sure to follow instructions in the car owner's manual or on the vehicle tyre information placard in the car to maintain proper tyre pressure, particularly for driving on highways and carrying heavy loads.
- Never bleed or reduce air pressure when tyres are hot from driving.
- Over- or under-inflation is dangerous and could lead to accidents or tyre damage.
- Check tyre (including spare tyre) inflation pressure at least once a month and before ever long trip.

## Wear limit

- Tyre use should be discontinued once the remaining tread depth reaches 1.6mm, as shown by the tread wear indicator. Change to new tyres before this happens.

## Tread Wear Indicator



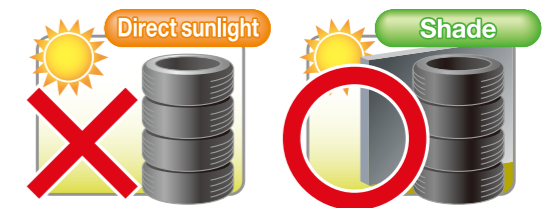
### Triangle marks (▲)

On the sidewall show the tread groove position of the "tread wear indicators", and these "tread wear indicators" indicate that 1.6mm of tread depth remain at which time tyre should be replaced.

## Important points for safe driving

- To enhance traffic safety and extend tyre life, YOKOHAMA recommends driving safely and avoiding unnecessarily hard acceleration, braking or cornering.
- If you feel that the car is unstable or making any unusual noises or vibrations, stop the car in a safe place and inspect its tyres. Even if no visible defects are found, drive slowly and ask your tyre dealer to inspect the tyres as soon as possible.
- To enhance traffic safety, YOKOHAMA recommends driving substantially slower under adverse weather or road conditions.
- When inspecting the tyres, also check for degradation and cracks in the valve. Be sure that the valve cap has been fastened properly.

## How to store tyres



**Direct sunlight or rain may cause a change in color or cracking, etc.**

Storing tyres outside where they are exposed to direct sunlight or rain accelerates rubber degradation.

- Keep tyres under cover to ensure water does not get inside tyres.
- Do not keep tyres in places where they are likely to come in contact with oil or water as well as be damaged or change shape
- Do not keep tyres near generators or batteries.
- Do not store tyres over long periods since materials within tyres become more likely to be discharged and stain the ground.

## Wheel alignment

- In the event of a problem with the suspension system of a vehicle, driving stability may be compromised and the tyres may wear abnormally. Please check and adjust wheel alignment to make sure it is correct.



# Check your tyres once a month to maintain performance and ensure safety.

Facts about tyres

Details of tyre safety checks are introduced via our website.

[http://www.y-yokohama.com/global/product/tire/learn/care\\_safety/](http://www.y-yokohama.com/global/product/tire/learn/care_safety/)

Check!

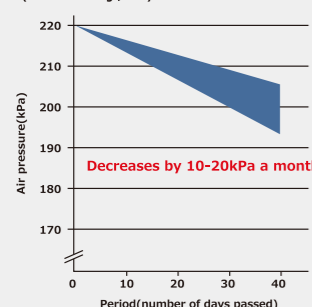
## Do you know about optimal air pressure?

### Optimal air pressure varies according to each car.

Please check the sticker attached near the door on the driver's seat side for details regarding air pressure.

Tyre air pressure decreases naturally by 10-20kPa every month.

Tyre size: 195/65R15 Starting pressure: 220kPa (100kPa=1.0kgf/cm<sup>2</sup>)



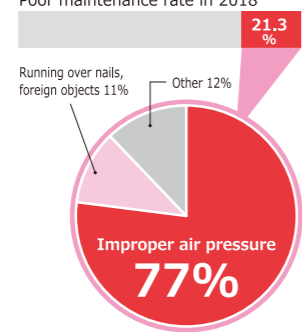
Regularly check your tyres to maintain optimal air pressure.

(Source: JATMA)

### Too high or too low air pressure causes problems!

Approximately two in every five vehicles are running on poorly maintained tyres and the tyre air pressure of approximately 80% of these vehicles is improper.

Poor maintenance rate in 2018



(Source: JATMA, 2018)

## When tyre air pressure decreases ...

### 1 Fuel consumption gets worse!

Rolling resistance increases and leads to a decrease in fuel economy due to energy loss.



### 2 Tyres are more likely to wear unevenly!

Too low air pressure usually causes uneven tyre wear on the outer edge of the tyre tread whereas too high air pressure is more likely to cause uneven wear on the center of the tread.

### 3 Driving performance declines!

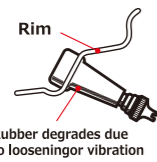
Tyre deformation is more likely to occur, compromising stability. Additionally, even if it's a high performance tyre, driving performance cannot be maintained, thereby affecting safety.

We recommend replacing the tubeless valve stem when replacing tyres.



When tyre valves deteriorate, it is more likely to cause air leakage.

• Since tubeless valves are made of the same rubber material as tyres, they deteriorate over time due to heat and other factors.



• Air leak from degraded part  
Rubber degrades due to loosening or vibration



Loosening of valve attachment part

Rubber degrades due to loosening or vibration

Degradation of valve core rubber

Check!

## Have you checked your tread depth?

### Let's check for indications of tread wear.



\*Circled areas are marked in color for explanatory purposes.

An indication of tread wear is when the tread depth drops to approximately 1.6mm.

## When the tread is worn down ...

### 1 The brakes are likely to become less effective on wet roads!

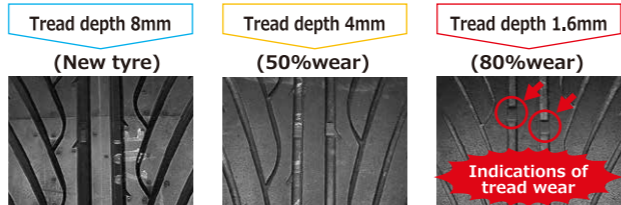
When the tread depth drops below roughly 50% of new tyres, the brake performance of tyres on wet roads will gradually decline and the braking distance increases significantly.

### 2 Driving at high speeds in the rain is particularly dangerous!

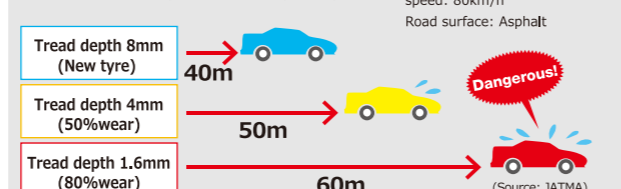
When the tread depth decreases, drainage capability declines and it is more likely to cause slippage in rainy weather. Aquaplaning tends to occur and diminish steering and brake effectiveness especially when driving at high speeds.



Using a tyre with indications of tread wear is prohibited as stipulated by laws and regulations.



Relationship of tread depth and braking distance in wet road surface conditions



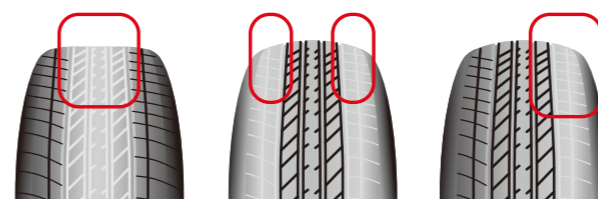
Tyres with a tread depth of 1.6mm or less are not allowed to be used as stipulated by laws and regulations.

Check!

## Do You have uneven tyre wear?

### Uneven tyre wear reduces the useful life of tyres.

- **Centre wear**  
Wear at the centre of the tread caused by too high air pressure
- **Shoulder wear**  
Wear on the outer edges or shoulders caused by insufficient air pressure
- **One-sided wear**  
Heavy vehicles such as minivans are more likely to cause tyre wear on one side



## Normally, front tyres wear out quickly when tyres are not rotated.

Tyre rotation is recommended on a regular basis (roughly every 5,000-7,000km).

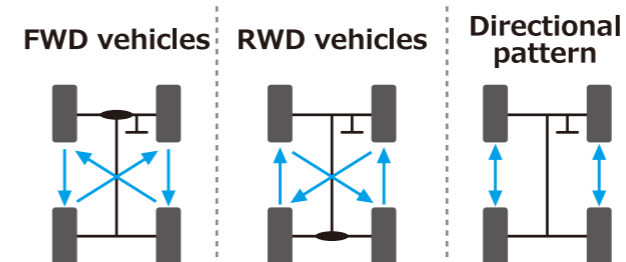


### Benefits of tyre rotation

- Prevention of uneven tyre wear
- Extension of useful life of tyres
- Consistent level of tyre wear

\*Front tyres of FWD vehicles wear out more quickly than rear tyres since front tyres serve both as driving and steering wheels.

General method of rotation



Early adjustment is recommended when tyre wear is caused by misalignment.



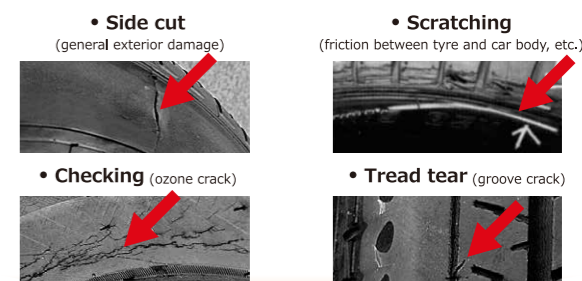
Early tyre replacement is recommended when tyres are reaching advanced stages of wear.



Check!

## Do you have damage or cracks on your tyres?

### These can cause problems such as a flat tyre.



### Main causes of damage

- Coming into contact with the curb or other obstacles on the road.
- Foreign objects such as rocks lodged in the tyre.

### Main causes of checking

- Excessive bending and stretching due to insufficient air pressure, etc.
- Concentration of stress on certain parts due to damage, etc.
- Degradation caused by UV rays, heat, etc.
- Overload and other causes due to running on curbs, etc.

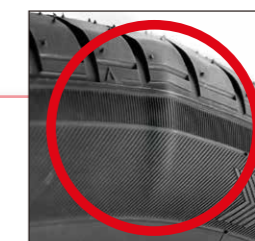
Early tyre replacement is recommended since damage or checking can cause problems.



Check!

## Are surface irregularities on the side of your tyres normal?

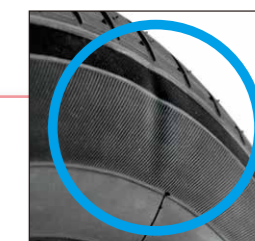
### Bulge on the sidewall of a tyre



When a certain area of the tyre sidewall is partially protruding, a cord may have broken internally due to external causes such as shock, and is therefore dangerous.

Replace the tyre immediately.

### Dent on the sidewall of a tyre



There are cases in which a dent occurs and extends toward the sidewall area of a tyre. Such dents occur due to the internal structure and have no effects in terms of safety.

This is not a sign of a defective tyre.